

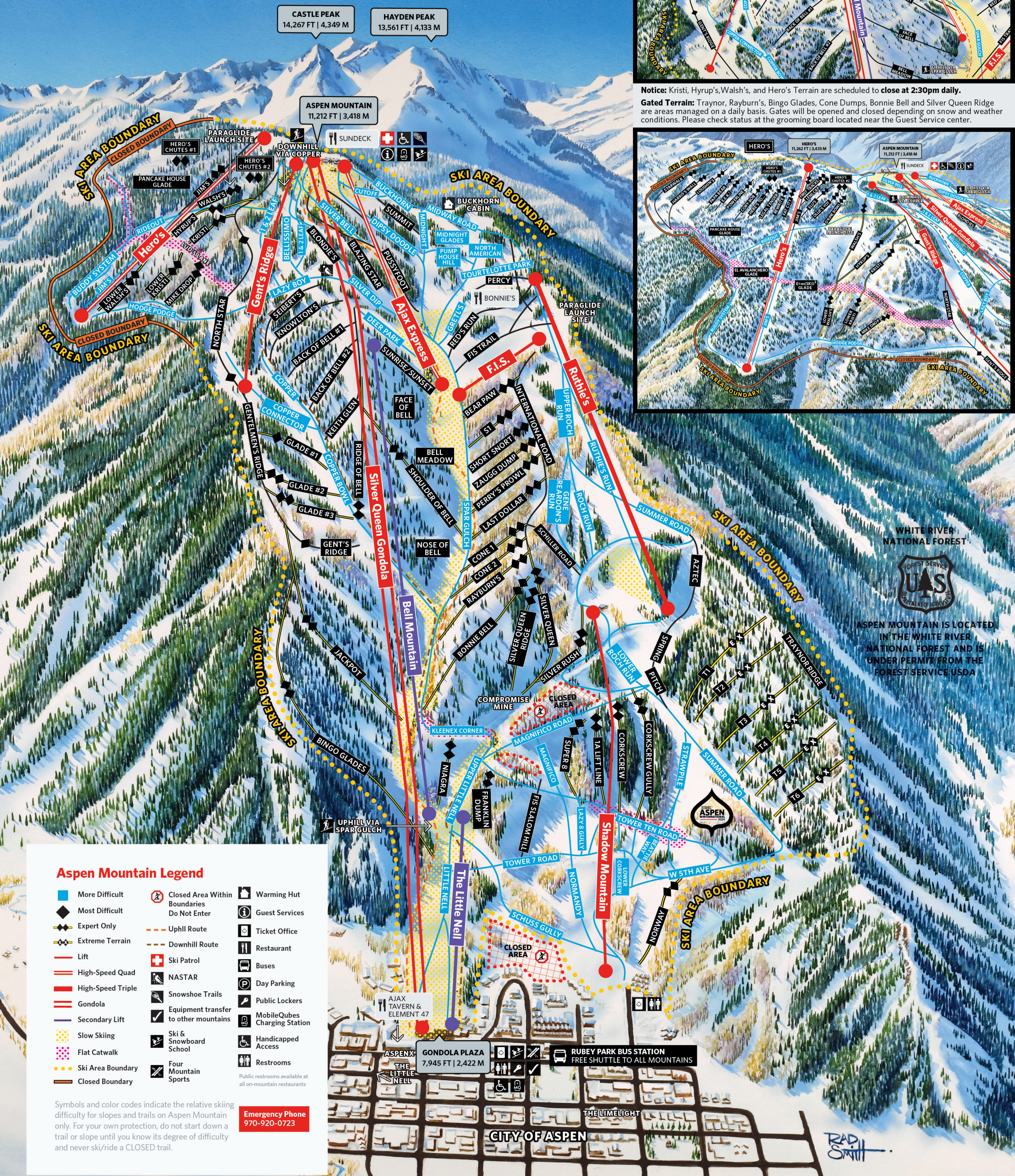
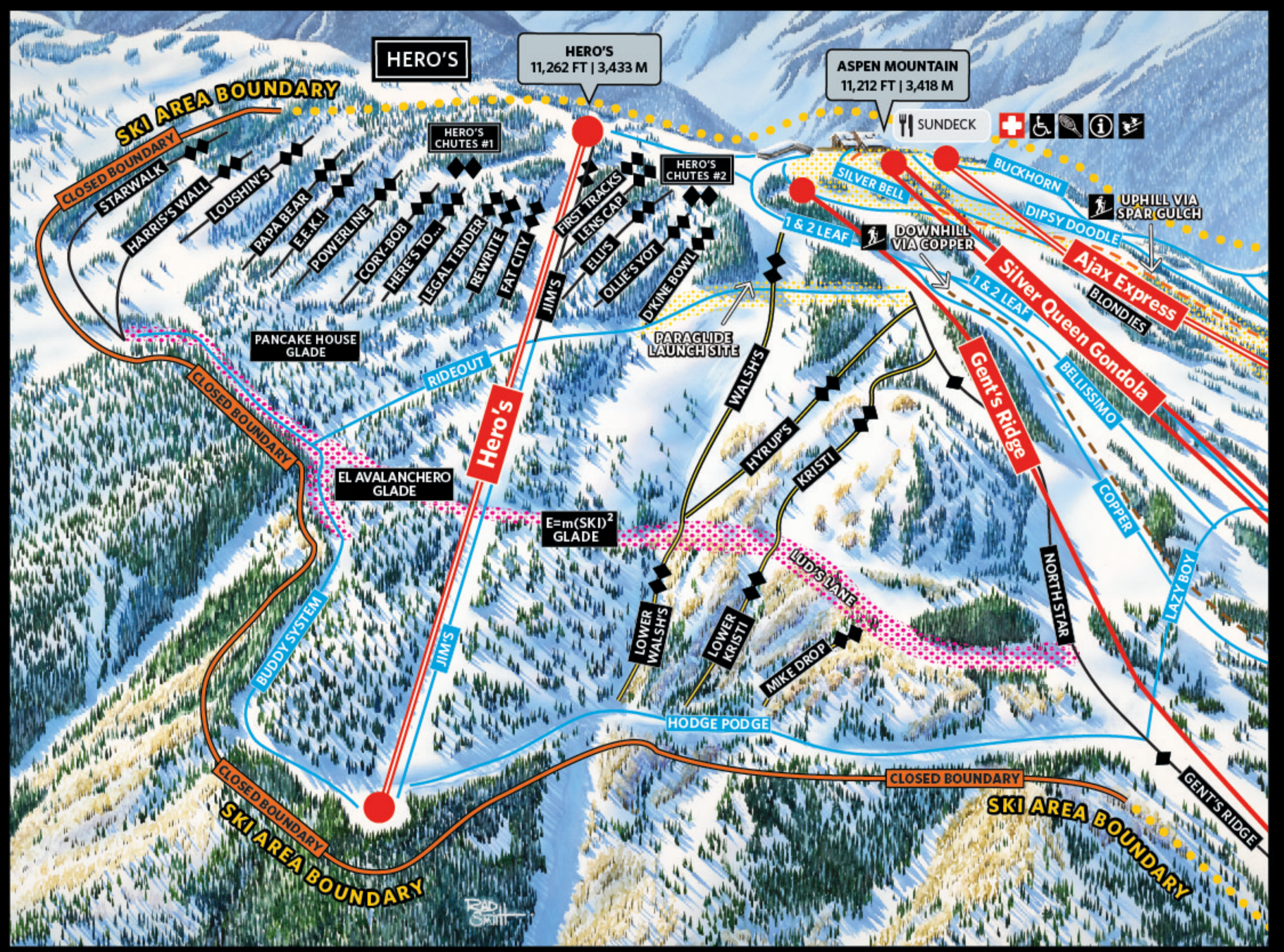
CASTLE PEAK
14,267 FT | 4,349 M

HAYDEN PEAK
13,561 FT | 4,133 M

ASPEN MOUNTAIN
11,212 FT | 3,418 M



Notice: Kristi, Hyrup's, Walsh's, and Hero's Terrain are scheduled to close at 2:30pm daily.
Gated Terrain: Traynor, Rayburn's, Bingo Glades, Cone Dumps, Bonnie Bell and Silver Queen Ridge are areas managed on a daily basis. Gates will be opened and closed depending on snow and weather conditions. Please check status at the grooming board located near the Guest Service center.



WHITE RIVER NATIONAL FOREST
 FOREST SERVICE
 U.S. DEPARTMENT OF AGRICULTURE
 ASPEN MOUNTAIN IS LOCATED IN THE WHITE RIVER NATIONAL FOREST AND IS UNDER PERMIT FROM THE FOREST SERVICE USDA

Aspen Mountain Legend

- | | | |
|-------------------|--|--|
| More Difficult | Closed Area Within Boundaries Do Not Enter | Warming Hut |
| Most Difficult | Uphill Route | Guest Services |
| Expert Only | Downhill Route | Ticket Office |
| Extreme Terrain | Ski Patrol | Restaurant |
| Lift | NASTAR | Buses |
| High-Speed Quad | Snowshoe Trails | Day Parking |
| High-Speed Triple | Equipment transfer to other mountains | Public Lockers |
| Gondola | Ski & Snowboard School | MobileQubes Charging Station |
| Secondary Lift | Ski & Snowboard School | Handicapped Access |
| Slow Skiing | Ski & Snowboard School | Restrooms |
| Flat Catwalk | Ski & Snowboard School | <small>Public restrooms available at all on-mountain restaurants</small> |
| Ski Area Boundary | Ski & Snowboard School | |
| Closed Boundary | Ski & Snowboard School | |

Symbols and color codes indicate the relative skiing difficulty for slopes and trails on Aspen Mountain only. For your own protection, do not start down a trail or slope until you know its degree of difficulty and never ski/ride a CLOSED trail.

Emergency Phone
970-920-0723

ASPENX
THE LITTLE NELL
GONDOLA PLAZA
7,945 FT | 2,422 M

RUBEY PARK BUS STATION
FREE SHUTTLE TO ALL MOUNTAINS

CITY OF ASPEN

TRAD
SMITH